

Oracle® Banking Platform Collections

Infrastructure Setup Guide

Release 2.3.0.0.0

E56276-01

July 2014

Copyright © 2011, 2014, Oracle and/or its affiliates. All rights reserved.

This software and related documentation are provided under a license agreement containing restrictions on use and disclosure and are protected by intellectual property laws. Except as expressly permitted in your license agreement or allowed by law, you may not use, copy, reproduce, translate, broadcast, modify, license, transmit, distribute, exhibit, perform, publish or display any part, in any form, or by any means. Reverse engineering, disassembly, or decompilation of this software, unless required by law for interoperability, is prohibited.

The information contained herein is subject to change without notice and is not warranted to be error-free. If you find any errors, please report them to us in writing.

U.S. GOVERNMENT END USERS: Oracle programs, including any operating system, integrated software, any programs installed on the hardware, and/or documentation, delivered to U.S. Government end users are "commercial computer software" pursuant to the applicable Federal Acquisition Regulation and agency-specific supplemental regulations. As such, use, duplication, disclosure, modification, and adaptation of the programs, including any operating system, integrated software, any programs installed on the hardware, and/or documentation, shall be subject to license terms and license restrictions applicable to the programs. No other rights are granted to the U.S. Government.

This software or hardware is developed for general use in a variety of information management applications. It is not developed or intended for use in any inherently dangerous applications, including applications that may create a risk of personal injury. If you use this software or hardware in dangerous applications, then you shall be responsible to take all appropriate failsafe, backup, redundancy, and other measures to ensure its safe use. Oracle Corporation and its affiliates disclaim any liability for any damages caused by use of this software or hardware in dangerous applications.

Oracle and Java are registered trademarks of Oracle and/or its affiliates. Other names may be trademarks of their respective owners.

This software or hardware and documentation may provide access to or information on content, products and services from third parties. Oracle Corporation and its affiliates are not responsible for and expressly disclaim all warranties of any kind with respect to third-party content, products, and services. Oracle Corporation and its affiliates will not be responsible for any loss, costs, or damages incurred due to your access to or use of third-party content, products, or services.

Contents

Preface vii

- Audience..... vii
- Documentation Accessibility vii
- Organization of the Guide vii
- Conventions viii

1 Introduction

2 PTP Approval Changes

- 2.1 PTP Changes in APM 2-3
 - 2.1.1 Adding the Attributes Required for PTP OES Validation 2-3
 - 2.1.2 Editing Conditions on Attribute..... 2-7
 - 2.1.3 Adding Policies to Resources 2-9
 - 2.1.4 Giving Grant..... 2-18

List of Figures

2-1	APM (OES) Login	2-4
2-2	Attribute - PromiseToPay_DaysPastDue	2-5
2-3	Attribute - PromiseToPay_DaysPastDue New.....	2-5
2-4	Entering Values	2-6
2-5	Authorization Management - Creating a New Resource.....	2-7
2-6	Authorization Management - New Resource Page	2-8
2-7	Authorization Management - Selecting Resource Type.....	2-8
2-8	Service Searched Screen	2-9
2-9	Searching a Service	2-10
2-10	Search Resources - Find Policies.....	2-10
2-11	Search Authorization Policies	2-10
2-12	Search Principal.....	2-12
2-13	Search Principal - Application Roles.....	2-13
2-14	Search Principal.....	2-14
2-15	Search Targets.....	2-15
2-16	Add Targets	2-16
2-17	Target Appears.....	2-17
2-18	Targets - performwithoutApprovals.....	2-17
2-19	Condition Builder	2-18

List of Tables

2-1	Product-Shipped Adapter Parameters.....	2-1
2-2	Verifying BPM Worklist Parameters.....	2-2
2-3	PTP Manual and Auto-Approve Parameters.....	2-6
2-4	Creating New Resources.....	2-8
2-5	Application Roles.....	2-9
2-6	Searching Policies - Search Authorization	2-11
2-7	Searching Policies - Giving Grant.....	2-18

Preface

This document helps you to configure the Collections infrastructure setup.

This preface contains the following topics:

- [Audience](#)
- [Documentation Accessibility](#)
- [Organization of the Guide](#)
- [Conventions](#)

Audience

This document is intended for the following:

- Consulting Staff
- Administrators

Documentation Accessibility

For information about Oracle's commitment to accessibility, visit the Oracle Accessibility Program website at <http://www.oracle.com/pls/topic/lookup?ctx=acc&id=docacc>.

Access to Oracle Support

Oracle customers have access to electronic support through My Oracle Support. For information, visit <http://www.oracle.com/pls/topic/lookup?ctx=acc&id=info> or visit <http://www.oracle.com/pls/topic/lookup?ctx=acc&id=trs> if you are hearing impaired.

Organization of the Guide

This document contains:

Chapter 1, "Introduction"

This chapter presents an overview of the infrastructure setup required for Collections.

Chapter 2, "PTP Approval Changes"

This chapter describes the PTP approval changes, prerequisite, and verification for infrastructure setup.

Conventions

The following text conventions are used in this document:

Convention	Meaning
boldface	Boldface type indicates graphical user interface elements associated with an action, or terms defined in text or the glossary.
<i>italic</i>	Italic type indicates book titles, emphasis, or placeholder variables for which you supply particular values.
monospace	Monospace type indicates commands within a paragraph, URLs, code in examples, text that appears on the screen, or text that you enter.

Introduction

This document explains the configuration required in enterprise services, such as DMS, OIM, APS to enable Collections module deployment along with OBP platform. You must perform the configuration outlined in this document once Collections module is deployed along with OBP version 2.3.0.0.0. Collections module uses Document Management System (DMS), Oracle Identity Manager (OIM), APS API for document generation and delivery, user profile management, and application security. Various functional components in Collections use the enterprise services offered by OBP.



PTP Approval Changes

Collectors take promise to pay from customers for the outstanding amount. A Promise to Pay (PTP) transaction may require supervisor approval based on various parameters. The parameters on which PTP approval decision has to be made are covered in subsequent sections along with the details of configuration required to setup the approval process. The PTP approval process has been implemented with Oracle Authorization Policy Manager.

Prerequisite and Verification

Before you configure the Oracle Authorization Policy Manager (OAPM), ensure the following verifications are performed:

Verifying Installed Application

You need to follow the below mentioned steps to verify installed application:

1. Collections module must be deployed along with OBP and is up and running.
2. SOA Domain must be configured along with OBP UI and Host Domain.
3. Oracle Authorization Policy Manager (OAPM) must be installed. OAPM is used to implement the resource hierarchies and multiple policy definitions. This is also termed as OES (Oracle Entitlements Server) or APM (Authorization Policy Manager) to verify product shipped configurations in the SOA Domain.

The UI, Host and SOA domains are secured.

4. Ensure that the following are present for PTP approval OES parameters. Following are product shipped parameters, which can be used for configuration:

Table 2–1 Product-Shipped Adapter Parameters

<Host_Home>/config/properties/ConstraintAttributeHelper.properties Product Shipped Parameters	Adapters
PromiseToPay.PTPType	com.ofss.fc.app.adapter.impl.collection.PromiseToPayWorkflowAdapter
PromiseToPay.ProductGroup	com.ofss.fc.app.adapter.impl.collection.PromiseToPayWorkflowAdapter
PromiseToPay.DaysPastDue	com.ofss.fc.app.adapter.impl.collection.PromiseToPayWorkflowAdapter
PromiseToPay.CoverageRatio	com.ofss.fc.app.adapter.impl.collection.PromiseToPayWorkflowAdapter
PromiseToPay.ScrificeAmount	com.ofss.fc.app.adapter.impl.collection.PromiseToPayWorkflowAdapter

Table 2–1 (Cont.) Product-Shipped Adapter Parameters

<Host_Home>/config/properties/ConstraintAttributeHelper.properties Product Shipped Parameters	Adapters
PromiseToPay.DaysToFirstInstallment	com.ofss.fc.app.adapter.impl.collection.PromiseToPayWorkflowAdapter
PromiseToPay.NumberOfInstallments	com.ofss.fc.app.adapter.impl.collection.PromiseToPayWorkflowAdapter
PromiseToPay.TotalPromiseDurationInDays	com.ofss.fc.app.adapter.impl.collection.PromiseToPayWorkflowAdapter
PromiseToPay.UserRole	com.ofss.fc.app.adapter.impl.collection.PromiseToPayWorkflowAdapter

- To verify whether PTP is configured for approval in the BPM worklist, use the following piece of SQL statement. The SQL query has to be run on the OBP Host database.

```
SELECT * from Flx_Sm_Authorizations_B where Cod_Service_Id =
'com.ofss.fc.appx.collection.service.promisetopay.PromiseToPayApplicationServiceSpi.create';
```

Table 2–2 Verifying BPM Worklist Parameters

Verify results based on the following table:Column	Values
COD_SERVICE_ID	com.ofss.fc.appx.collection.service.promisetopay.PromiseToPayApplicationServiceSpi.create
COD_AUTH_ID	1052
AUTH_DESC	MATRIX_AUTH (This is to execute the OES rules and check if approval is needed or the PTP can be auto approved)
IS_AUTH_REQUIRED	Y (meaning that the PTP should check the OES rules and go for approval if needed)
IS_DELEGATED	N
CREATED_BY	SETUP
CREATION_DATE	<some date and time value>
LAST_UPDATED_BY	SETUP
LAST_UPDATE_DATE	<some date and time value>
OBJECT_VERSION_NUMBER	1
OBJECT_STATUS	A

If the above row is not present, insert a new row with given values by using the following SQL statements.

```
Insert into FLX_SM_AUTHORIZATIONS_B (COD_SERVICE_ID,COD_AUTH_ID,AUTH_DESC, IS_AUTH_REQUIRED, IS_DELEGATED, CREATED_BY, CREATION_DATE, LAST_UPDATED_BY, LAST_UPDATE_DATE, OBJECT_VERSION_NUMBER, OBJECT_STATUS) values ('com.ofss.fc.app.collection.service.promisetopay.PromiseToPayApplicationServiceSpi.create', '1052', 'MATRIX_AUTH', 'Y', 'N', 'SETUP', to_timestamp('31-MAY-10 02.33.04.000000000 PM', 'DD-MON-RR HH.MI.SS.FF
```

```
AM'), 'SETUP', to_timestamp('31-MAY-10 02.33.04.000000000 PM', 'DD-MON-RR  
HH.MI.SS.FF AM'), 1, 'A');
```

If the value of the field IS_AUTH_REQUIRED is N, then it can be updated from SM110 screen that is, Approval Checks. The value has to be update to Y from SM110 screen for this application service.

2.1 PTP Changes in APM

APM/OES is a system where you can define Oracle Entitlement Server (OES) rules. These rules help in deciding whether PTP approval should be a manual approval or auto-approved.

Note: These rules are part of Day Zero Setup. You can use this document to verify whether the rules have been configured or not. If the rules are not configured, then you use this document to configure them.

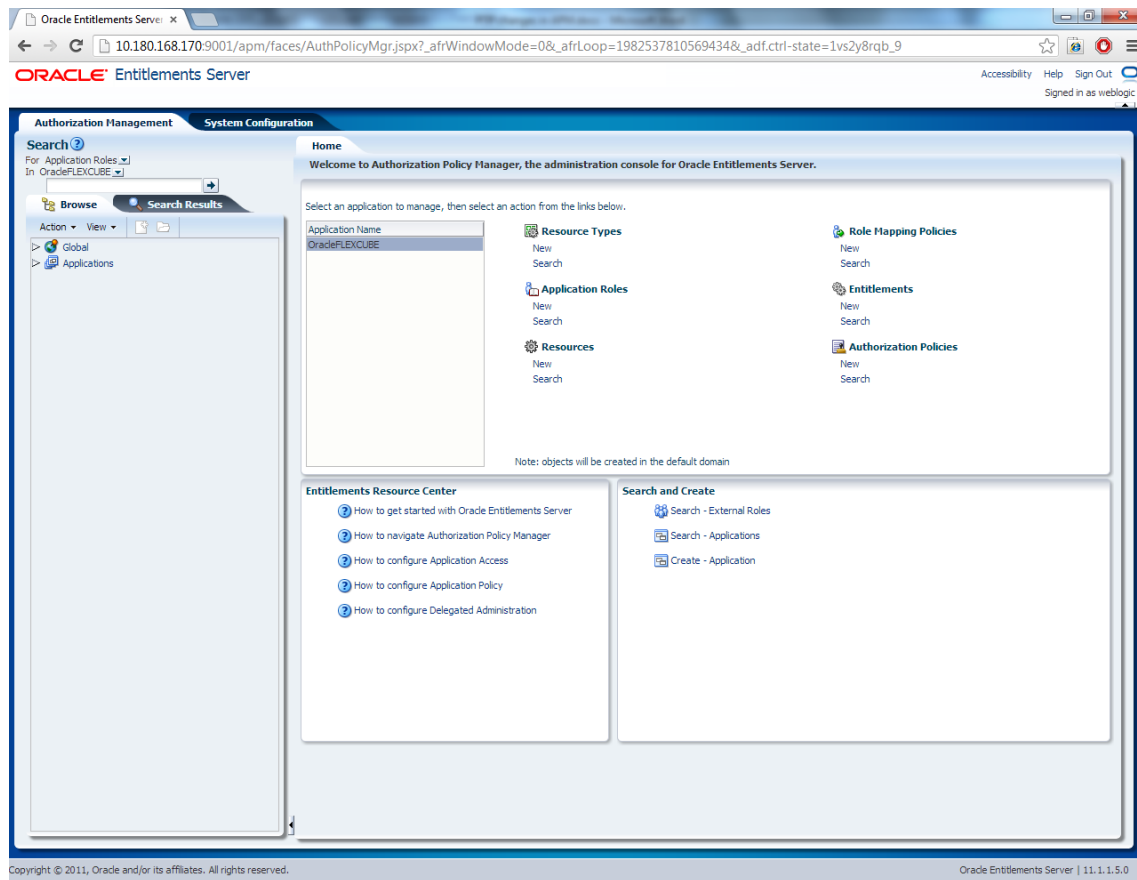
1. In APM, you should add the attributes, based on their values, it is decided whether PTP should be auto-approved or should go for manual approval.
2. The attributes added uses simple if else conditions and based on the final result (true/false), the decision to auto-approve or manual approve is made.

2.1.1 Adding the Attributes Required for PTP OES Validation

Follow the steps below to add the attributes required for PTP OES validation:

1. Log in to APM (OES) with administrative credentials.

Figure 2-1 APM (OES) Login

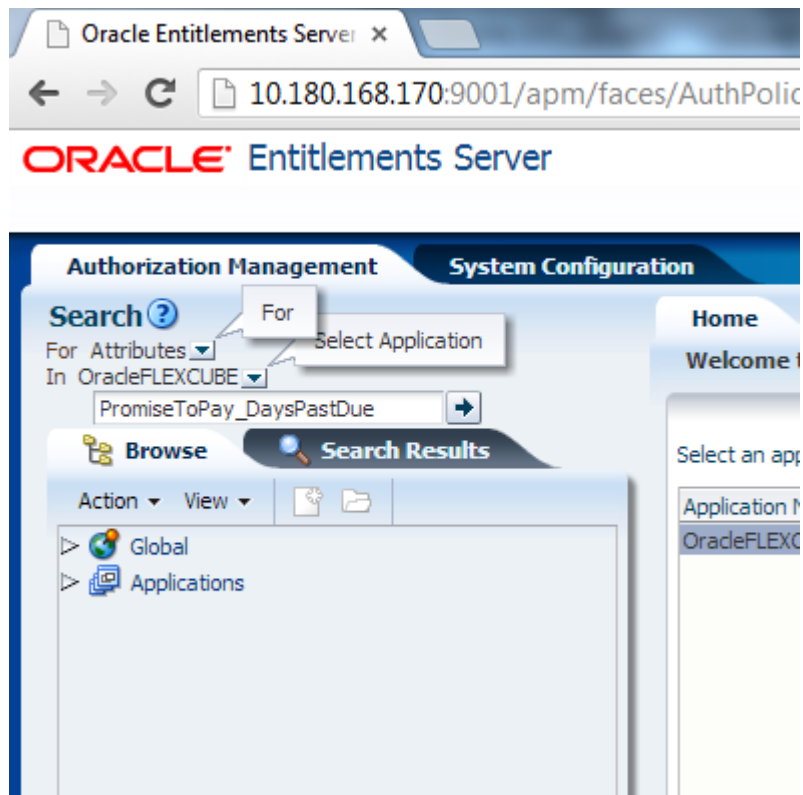


2. In the **Authorization Management** tab, under **Search > For Attributes > In OID PolicyDomain > Search** for any attribute from the list provided below:

- PromiseToPay_PTPTType
- PromiseToPay_ProductGroup
- PromiseToPay_DaysPastDue
- PromiseToPay_CoverageRatio
- PromiseToPay_ScrificeAmount
- PromiseToPay_DaysToFirstInstallme
- PromiseToPay_NumberOfInstallmen
- PromiseToPay_TotalPromiseDurationInDays
- PromiseToPay_UserRole

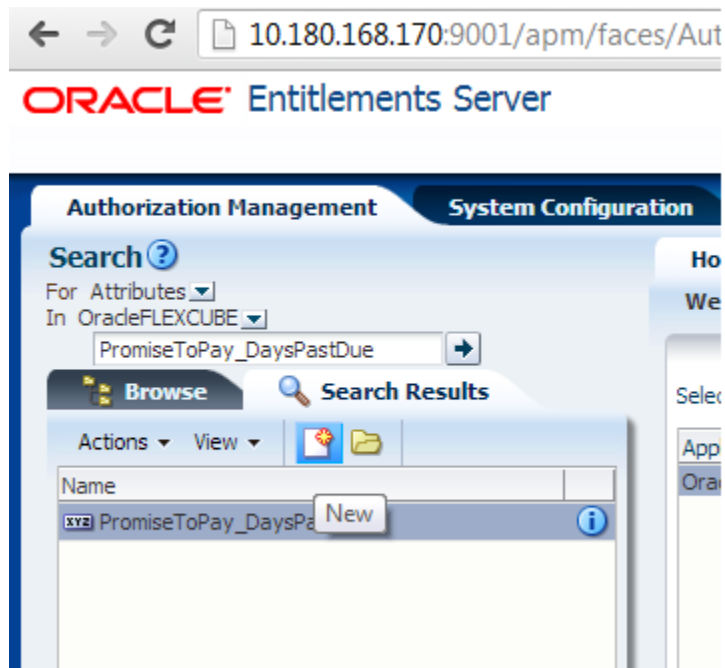
Below mentioned screen is the Attribute **PromiseToPay_DaysPastDue** screen.

Figure 2–2 Attribute - PromiseToPay_DaysPastDue



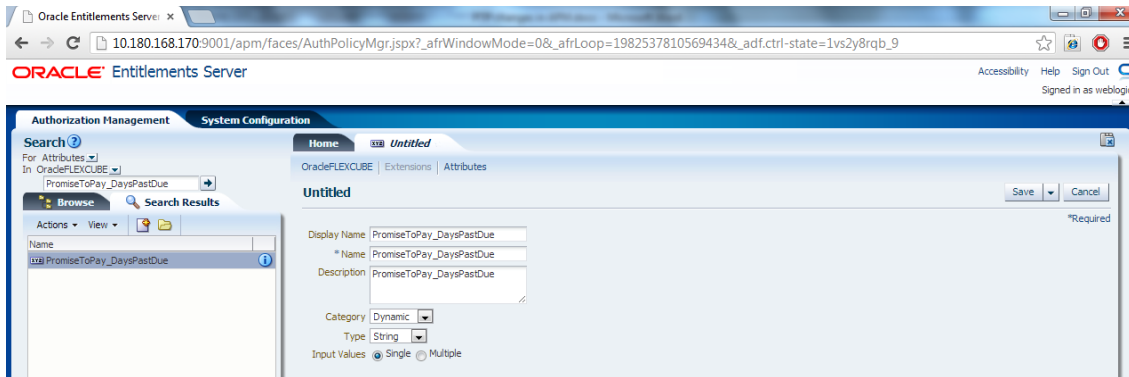
3. If the attribute **PromiseToPay_DaysPastDue** does not exist, then create it by clicking the New icon.

Figure 2–3 Attribute - PromiseToPay_DaysPastDue New



4. Enter **Display Name**, **Name**, and **Description**. The **Display Name**, **Name**, and **Description** will be same as the attribute name.

Figure 2–4 Entering Values



5. Select **Category** as **Dynamic**.
6. Select the **Type** and **Input Values** based on the field type and the kind of values.
7. Click **Save**.

The following table lists the PTP manual and auto-approve parameters.

Table 2–3 PTP Manual and Auto-Approve Parameters

Display Name	Name	Description	Category	Type	Input Values
PromiseToPay_PTPType	PromiseToPay_PTPType	Indicates the promise to pay type.	Dynamic	String	Single
PromiseToPay_ProductGroup	PromiseToPay_ProductGroup	Indicates the product group for which the PTP has been taken.	Dynamic	String	Single
PromiseToPay_DaysPastDue	PromiseToPay_DaysPastDue	Indicates the days past due.	Dynamic	String	Single
PromiseToPay_CoverageRatio	PromiseToPay_CoverageRatio	Indicates the coverage ratio.	Dynamic	Integer	Single
PromiseToPay_ScrificeAmount	PromiseToPay_ScrificeAmount	Indicates the sacrifice amount.	Dynamic	Integer	Single
PromiseToPay_DaysToFirstInstallment	PromiseToPay_DaysToFirstInstallment	Indicates the day after the first installment.	Dynamic	String	Single
PromiseToPay_NumberOfInstallments	PromiseToPay_NumberOfInstallments	Indicates the total number of installments in PTP.	Dynamic	String	Single
PromiseToPay_TotalPromiseDurationInDays	PromiseToPay_TotalPromiseDurationInDays	Indicates the total promise duration in days.	Dynamic	String	Single
PromiseToPay_UserRole	PromiseToPay_UserRole	Indicates the role of the user who has created the PTP.	Dynamic	String	Single

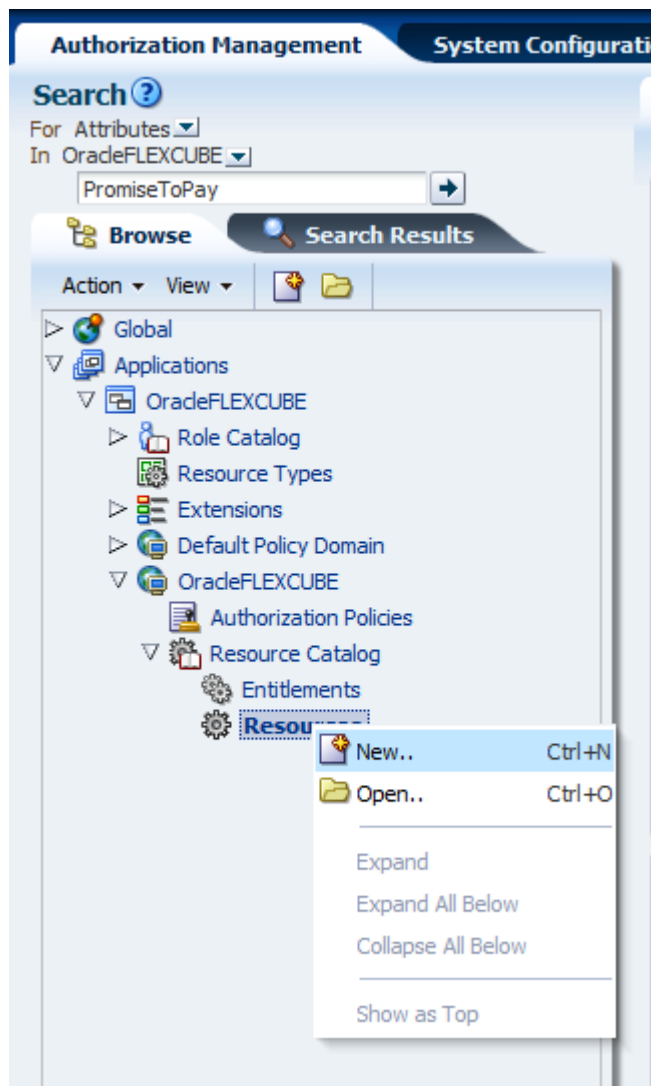
2.1.2 Editing Conditions on Attribute

The OES rules are checked based on the conditions defined in the rules. These rules are defined based on the functional requirement and business perspective. In this case, the OES rules are defined to decide whether PTP has to go for manual approval or has to be auto approved. If the outcome is true, auto approval is done, else PTP is sent for manual approval.

Note: The services will be product shipped and will be available after the day 0 setup. Please follow the steps below to define/verify the conditions on the attributes that are present in the table above.

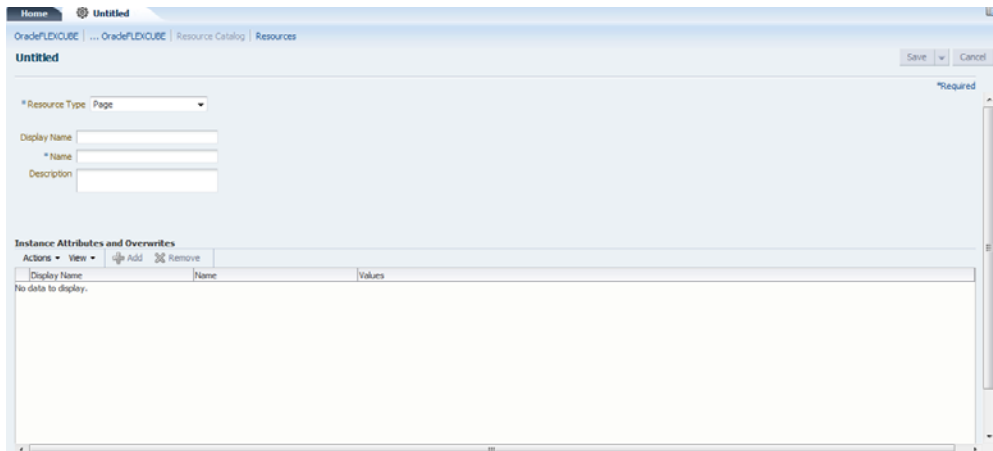
1. Click **Browse > Applications > [Policy Store Area] > [Policy Store Domain] > ResourceCatalog**. Select **Resources**, then right-click and select **Open** (to verify).
2. Right-click **Resources** and then select **New**.

Figure 2–5 Authorization Management - Creating a New Resource



When you click the **New** button, following screen appears.

Figure 2–6 Authorization Management - New Resource Page



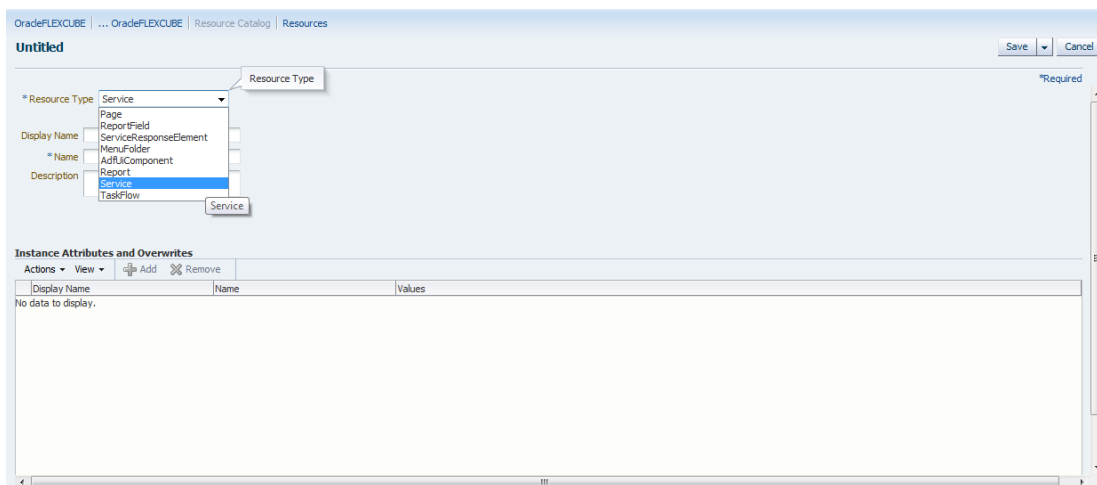
3. In the **Untitled** screen, specify the following values:

Table 2–4 Creating New Resources

Field Name	Value
Resource Type	Service
Display Name	com.ofss.fc.appx.collection.service.promisetopay.PromiseToPayApplicationServiceSpi.create
Name	com.ofss.fc.appx.collection.service.promisetopay.PromiseToPayApplicationServiceSpi.create
Description	com.ofss.fc.appx.collection.service.promisetopay.PromiseToPayApplicationServiceSpi.create

4. Select the Resource Type as **Service**.

Figure 2–7 Authorization Management - Selecting Resource Type



5. Click **Save**.

2.1.3 Adding Policies to Resources

Policies are added to apply grant or deny permissions to the application roles to the application service configured.

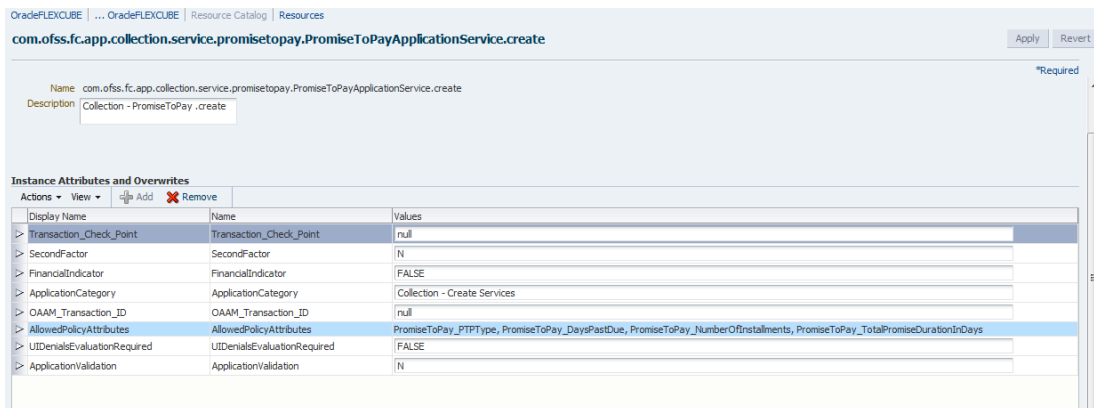
The following application roles are shipped along with the product and will be available in Oracle Internet Directory (OID) once the Day Zero setup is completed.

Table 2–5 Application Roles

Application Role Description	Corresponding Role in OID
Collector (Dialer)	ClnCollectorDialer
Collector (Early - Prompt mode)	ClnCollectorErPmtMd
Collector (Early - List mode)	ClnCollectorErLstMd
Collector (Recovery)	ClnCollectorRecov
Supervisor (Collection)	ClnSupervisorCln
Supervisor (Recovery)	ClnSupervisorRecov
Manager (Collection)	ClnManagerCln
Manager (Recovery)	ClnManagerRecov
Collection Admin	ClnCollectionAdmin

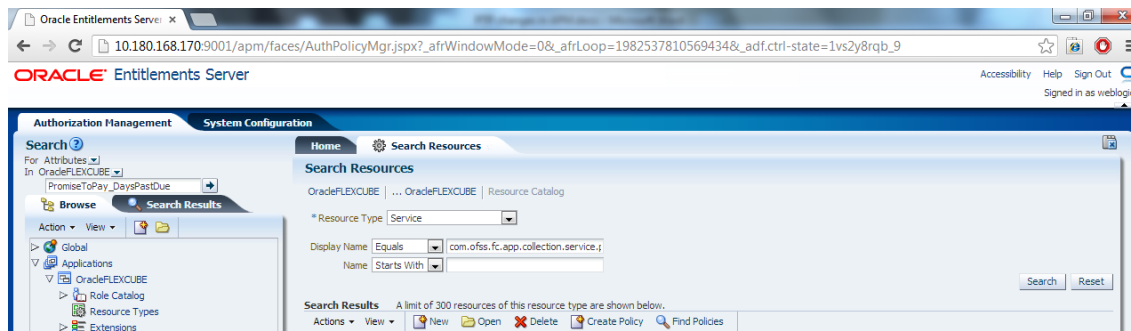
1. You can search the resource from APM domain and view the added attribute in the Service Searched screen.

Figure 2–8 Service Searched Screen



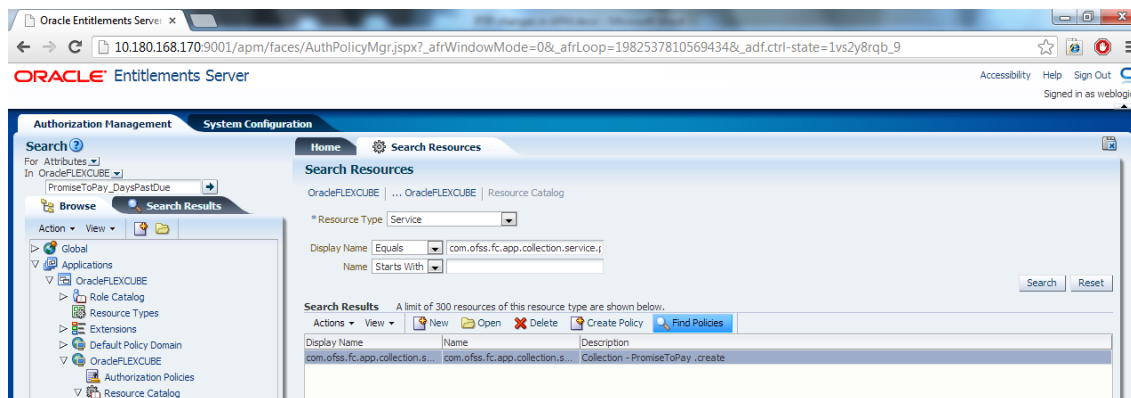
2. To search a service, select **Display Name** as **Equals** and **Value** as **com.ofss.fc.appx.collection.service.promisetopay.PromiseToPayApplicationServiceSpi.create**.

Figure 2–9 Searching a Service



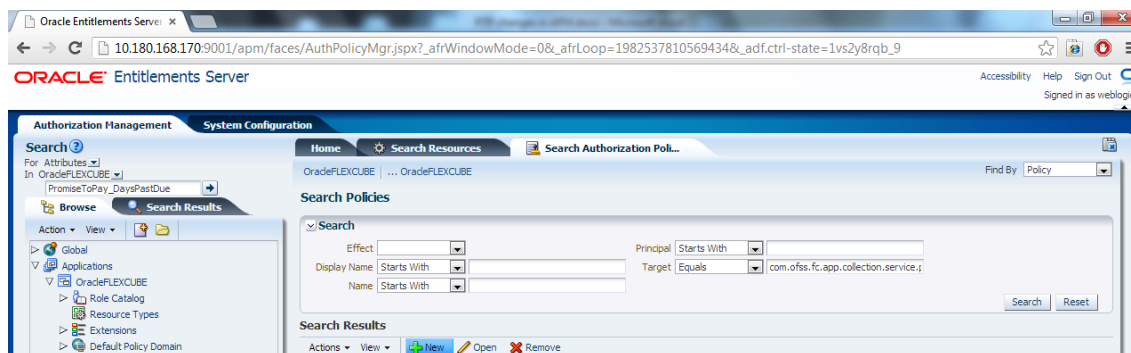
3. Click **Search**.
4. In the **Search Results** grid, click the returned value and then click **Find Policies**.

Figure 2–10 Search Resources - Find Policies



5. In the **Search Results** section, click **New**. A new tab named **Untitled** opens alongside Search Authorization Policies tab.

Figure 2–11 Search Authorization Policies



6. In the **Untitled** tab, specify the following values:

Table 2–6 Searching Policies - Search Authorization

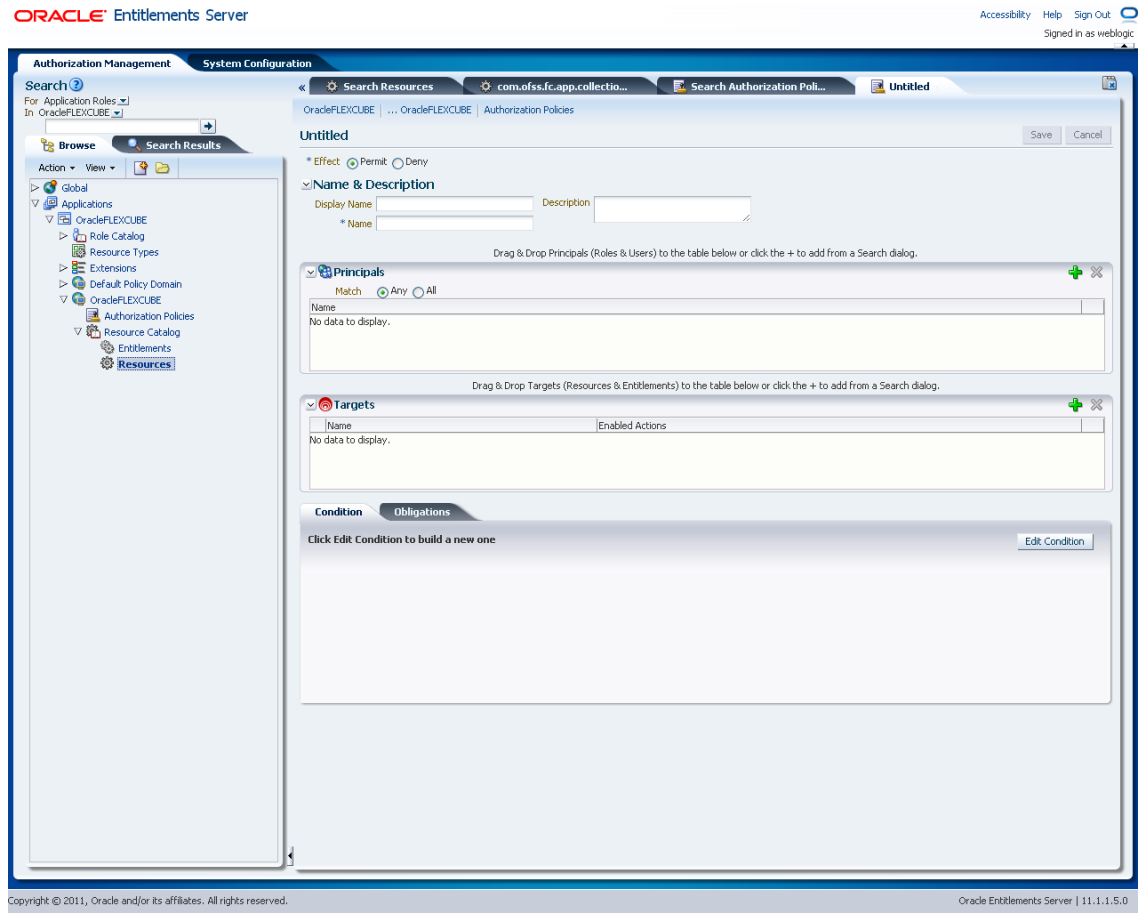
Field Name	Value
Effect	Permit
Display Name	<The_application_role_for_whom_grant_is_given_all_caps>_<application_name>_APPX_COLLECTION_SERVICE_PROMISETOPAY_PROMISETOPAYAPPLICATIONSERVICESPI_CREATE_PERFORMWITHOUTAPPROVALS_PL
Name	<The_application_role_for_whom_grant_is_given_all_caps>_<application_name>_APPX_COLLECTION_SERVICE_PROMISETOPAY_PROMISETOPAYAPPLICATIONSERVICESPI_CREATE_PERFORMWITHOUTAPPROVALS_PL
Description	<The_application_role_for_whom_grant_is_given_all_caps>_<application_name>_APPX_COLLECTION_SERVICE_PROMISETOPAY_PROMISETOPAYAPPLICATIONSERVICESPI_CREATE_PERFORMWITHOUTAPPROVALS_PL
Principals	Match - All

For example,

```
LNCOLLECTORDIALER_OBP_APPX_COLLECTION_SERVICE_PROMISETOPAY_
PROMISETOPAYAPPLICATIONSERVICESPI_CREATE_PERFORMWITHOUTAPPROVALS_PL
```

- a. In the **Principals** section, click the **Add Principals** icon. The **Search Principal** window appears.

Figure 2–12 Search Principal



- b. In the **Search Principal** window, select Application Roles tab, and then search for the application role which is shipped with the product.

Figure 2–13 Search Principal - Application Roles

Search for Principals and add them to the Selected Items table below.

Application Roles External Roles Users

Search | Default Roles

Application: OradeFLEXCUBE

Display Name: Starts With []

Name: Starts With []

Category: []

Search Reset

Search Results

View Add Selected Add All

Display Name	Role Name	Description	Category
No data to display.			

Selected Principals

View Remove Selected Remove All

Display Name	Name
--------------	------

Add Principals Cancel

- c. In the result grid, select **Authenticated** role and then click **Add Principals**.

Figure 2–14 Search Principal

Search for Principals and add them to the Selected Items table below.

Application Roles External Roles Users

Search | Default Roles

Application OracleFLEXCUBE

Display Name Starts With Coll

Name Starts With

Category

Search Reset

Search Results

View Add Selected Add All

Display Name	Role Name	Description	Category
CollectionAdministrators	CollectionAdministr...	Group of Collectio...	
collectionadmin	collectionadmin	Group of Collectio...	
Coll-Collector-Dialer	Coll-Collector-Dialer	Coll-Collector-Dialer	

Rows Selected 1

Selected Principals

View Remove Selected Remove All

Display Name	Name

Add Principals Cancel

- d. In the **Targets** section, click the **Add Targets** icon.

The **Search Target** window appears. In the **Search Targets** window, select the same service for which the policy is configured.

Figure 2–15 Search Targets

The screenshot displays the Oracle Entitlements Server Administration Console. The browser address bar shows the URL: `10.180.168.170:9001/apm/faces/AuthPolicyMgr.jspx?_afWindowMode=0&_afLoop=1982537810569434&_adf.ctrl-state=1vs2y8rqb_9`. The page title is "ORACLE Entitlements Server".

The main interface is titled "Authorization Management" and "System Configuration". The left-hand navigation pane shows a tree structure with "Resources" selected. The main content area is titled "Untitled" and shows the configuration for an authorization policy named "AUTHENTICATEDROLE_ORACLEF...".

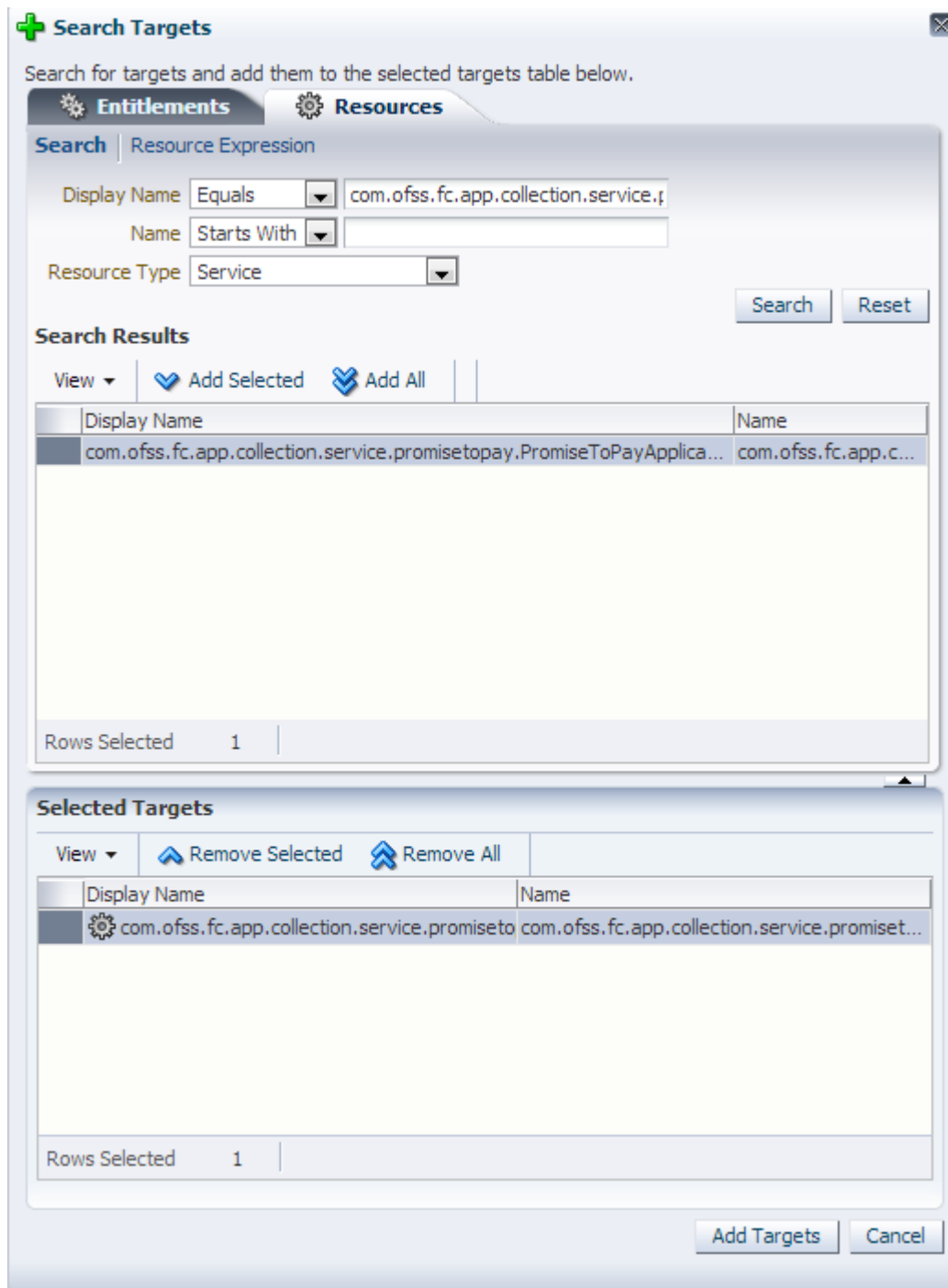
The configuration details include:

- Effect:** Permit Deny
- Name & Description:**
 - Display Name: AUTHENTICATEDROLE_ORACLEF...
 - Description: AUTHENTICATEDROLE_ORACLEF...EFLXCLUBE_APP_COLLECTION
 - *Name: AUTHENTICATEDROLE_ORACLEF...
- Principals:** A table with columns "Name" and "Enabled Actions". One principal, "Authenticated", is listed.
- Targets:** A table with columns "Name" and "Enabled Actions". It currently contains no data.
- Condition:** A section with a tab "Obligations" and a button "Edit Condition".

At the bottom of the page, the footer text reads: "Copyright © 2011, Oracle and/or its affiliates. All rights reserved. Oracle Entitlements Server | 11.1.1.5.0".

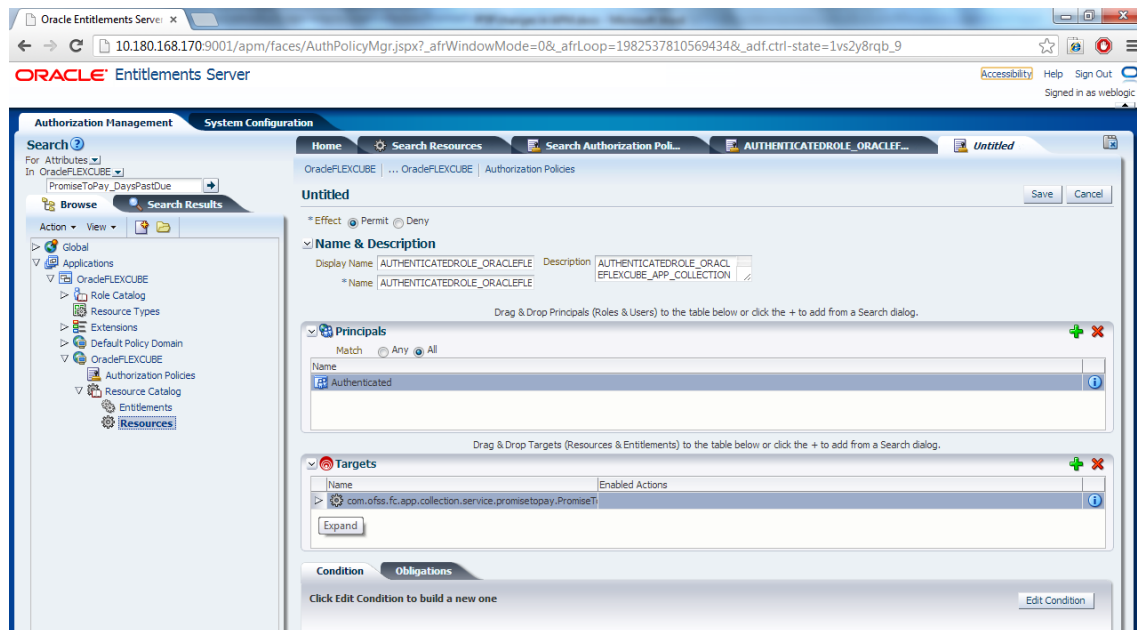
e. Click Add Targets.

Figure 2–16 Add Targets



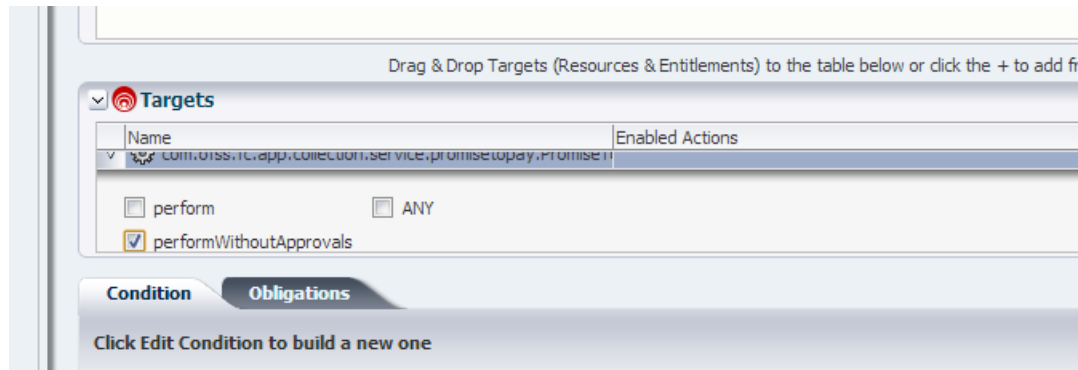
The searched target appears in the **Untitled** tab.

Figure 2–17 Target Appears



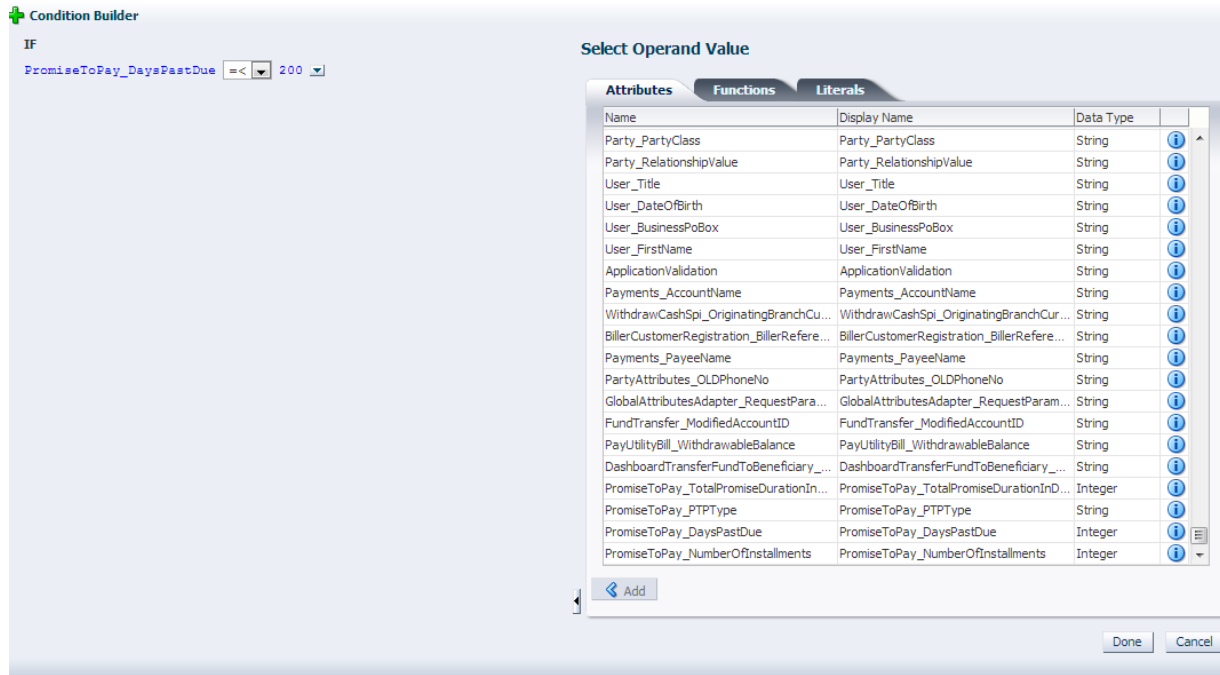
- f. In the **Targets** section, click the **Expand** arrow for the selected target and select **performWithoutApprovals**.

Figure 2–18 Targets - performwithoutApprovals



- g. Click **Edit Condition**.
- h. Select **PromiseToPay_DaysPastDue** attribute.
- i. Click **Add**.
- j. Select the condition.
- k. Select the value for comparison.

Figure 2–19 Condition Builder



- i. Click **Done**.
- m. Click **Save**.

2.1.4 Giving Grant

The grants are configured as part of Day Zero Setup. Please verify whether the grants have been configured or not.

If the grants are not configured, you must provide grants to the application roles that are allowed to work on the PromiseToPayApplicationService. In addition, any new grants have to be configured manually through APM.

Two grants have to be provided. The first grant is for access (perform) and the second grant is for executing the OES rules (perform without approvals).

1. Follow the steps from [Section 2.1.2, "Editing Conditions on Attribute"](#) and [Section 2.1.3, "Adding Policies to Resources"](#) to step e - **Click Add Targets**.
2. In the **Untitled** tab, specify the following values:

Table 2–7 Searching Policies - Giving Grant

Field Name	Value
Effect	Permit
Display Name	AUTHENTICATEDROLE_OBP_APPX_COLLECTION_SERVICE_PROMISETOPAY_PROMISETOPAYAPPLICATIONSERVICESPI_CREATE_PERFORM_PL
Name	AUTHENTICATEDROLE_OBP_APPX_COLLECTION_SERVICE_PROMISETOPAY_PROMISETOPAYAPPLICATIONSERVICESPI_CREATE_PERFORM_PL
Description	AUTHENTICATEDROLE_OBP_APPX_COLLECTION_SERVICE_PROMISETOPAY_PROMISETOPAYAPPLICATIONSERVICESPI_CREATE_PERFORM_PL

3. Click **Expand** in targets for the selected target.
4. Select **Perform**.
5. Click **Save**.

